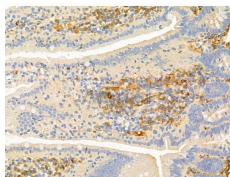


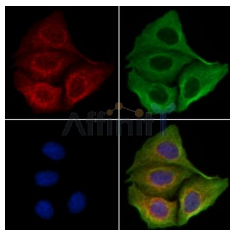
Phospho-CaMKII alpha/delta (Thr286) Ab

[References\(19\)](#) [Images\(11\)](#)

Cat.#: AF3493	Concn.: ~1mg/ml	Mol.Wt.: 50kDa
Size:	Source: Rabbit	Clonality: Polyclonal
Application:	WB 1:500-1:2000, IHC 1:50-1:200, IF/ICC 1:100-1:500 *The optimal dilutions should be determined by the end user.	
Reactivity:	Human,Mouse,Rat	
Storage:	Rabbit IgG in phosphate buffered saline , pH 7.4, 150mM NaCl, 0.02% sodium azide and 50% glycerol. Store at -20 °C. Stable for 12 months from date of receipt.	
Purification:	The Ab is from purified rabbit serum by affinity purification via sequential chromatography on phospho-peptide and non-phospho-peptide affinity columns.	
Immunogen:	A synthesized peptide derived from human CaMK2 alpha/delta around the phosphorylation site of Thr286.	
Uniprot:	Q9UQM7/Q13557	
Description:	CaMK2-delta a protein kinase of the CAMK2 family. A prominent kinase in the central nervous system that may function in long-term potentiation and neurotransmitter release. Member of the NMDAR signaling complex in excitatory synapses that may regulate NMDAR-dependent potentiation of the AMPAR and synaptic plasticity.	



AF3493 at 1/100 staining Mouse colon tissue by IHC-P. The sample was formaldehyde fixed and a heat mediated antigen retrieval step in citrate buffer was performed. The sample was then blocked and incubated with the primary Ab at 4°C overnight. An HRP conjugated anti-Rabbit Ab was used as the secondary Ab.



AF3493 staining H2O2 treated Hela cells by IF/ICC. The samples were fixed with PFA and permeabilized in 0.1% Triton X-100, then blocked in 10% serum for 45 minutes at 25°C. Samples were then incubated with primary Ab(AF3493) and mouse anti-beta tubulin Ab(T0023) for 1 hour at 37°C. An AlexaFluor594 conjugated goat anti-rabbit IgG(H+L) Ab(Red) and an AlexaFluor488 conjugated goat anti-mouse IgG(H+L) Ab(Green) were used as the secondary Ab.
The nuclear counter stain is DAPI(blue).

IMPORTANT: For western blot, incubate membrane with diluted primary Ab

in 5% w/v milk , 1X TBS, 0.1% Tween@20 at 4°C with gentle shaking,
overnight.

For Research Use Only. Not for use in diagnostic and therapeutic
procedures. Not for resale without express authorization.