

ATP1A1 Ab

[References\(8\)](#) [Images\(7\)](#)

Cat.#: AF6109 Concn.: ~1mg/ml Mol.Wt.: 113kDa
Size: Source: Rabbit Clonality: Polyclonal

Application: WB 1:500-1:2000, IF/ICC 1:100-1:500
*The optimal dilutions should be determined by the end user.

Reactivity: Human, Mouse, Rat

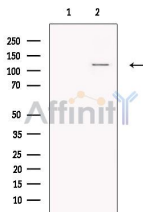
Storage: Rabbit IgG in phosphate buffered saline , pH 7.4, 150mM NaCl, 0.02% sodium azide and 50% glycerol. Store at -20 °C. Stable for 12 months from date of receipt.

Purification: The antiserum was purified by peptide affinity chromatography using SulfoLink™ Coupling Resin (Thermo Fisher Scientific).

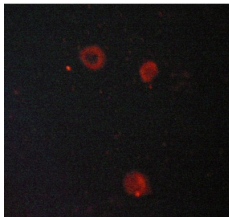
Immunogen: A synthesized peptide derived from human ATP1A1, corresponding to a region within N-terminal amino acids.

Uniprot: P05023

Description: ATP1A1 the catalytic component of the active enzyme, which catalyzes the hydrolysis of ATP coupled with the exchange of Na and K ions across the plasma membrane. This action creates the electrochemical gradient of Na and K, providing the energy for active transport of various nutrients.



Western blot analysis of extracts from various samples, using Sodium Potassium ATPase alpha 1 Ab.
Lane 1: HEK293(treated with PMA 125ng/ml, treated with blocking peptide);
Lane 2: HEK293(treated with PMA 125ng/ml);
Lane 3: 30mins).



AF6109 staining MCF-7 cells by ICC/IF. Cells were fixed with PFA and permeabilized in 0.1% saponin prior to blocking in 10% serum for 45 minutes at 37°C. The primary Ab was diluted 1/400 and incubated with the sample for 1 hour at 37°C. A Alexa Fluor® 594 conjugated goat polyclonal to rabbit IgG (H+L), diluted 1/600 was used as secondary Ab.

IMPORTANT: For western blot, incubate membrane with diluted primary Ab in 5% w/v milk , 1X TBS, 0.1% Tween@20 at 4°C with gentle shaking, overnight.



Affinity Biosciences

website: www.affbiotech.com

order: order@affbiotech.com

For Research Use Only. Not for use in diagnostic and therapeutic procedures. Not for resale without express authorization.