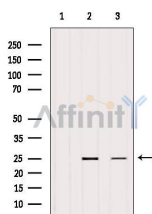


## eIF4E Ab

[References\(2\)](#) [Images\(2\)](#)

|               |   |                       |
|---------------|---|-----------------------|
| Cat.#: AF6110 | Concn.: ~1mg/ml   | Mol.Wt.: 25kDa        |
| Size:         | Source: Rabbit  | Clonality: Polyclonal |
| Application:  | WB 1:500-1:2000, IHC 1:50-1:200, IF/ICC 1:100-1:500<br>*The optimal dilutions should be determined by the end user.   |                       |
| Reactivity:   | Human, Mouse, Rat   |                       |
| Storage:      | Rabbit IgG in phosphate buffered saline, pH 7.4, 150mM NaCl, 0.02% sodium azide and 50% glycerol. Store at -20 °C. Stable for 12 months from date of receipt.   |                       |
| Purification: | The antiserum was purified by peptide affinity chromatography using SulfoLink™ Coupling Resin (Thermo Fisher Scientific).   |                       |
| Immunogen:    | A synthesized peptide derived from human eIF4E, corresponding to a region within C-terminal amino acids.  |                       |
| Uniprot:      | P06730  |                       |
| Description:  | eIF4E a protein of the eukaryotic initiation factor 4E family. Recognizes and binds the 7-methylguanosine-containing mRNA cap during an early step in the initiation of protein synthesis and facilitates ribosome binding by inducing the unwinding of the mRNAs secondary structures. |                       |



Western blot analysis of extracts from various samples, using eIF4E Ab.  
Lane 1: B16F10 treated with blocking peptide;  
Lane 2: B16F10;  
Lane 3: Hybridoma cells.

**IMPORTANT:** For western blot, incubate membrane with diluted primary Ab in 5% w/v milk, 1X TBS, 0.1% Tween@20 at 4°C with gentle shaking, overnight.

For Research Use Only. Not for use in diagnostic and therapeutic procedures. Not for resale without express authorization.