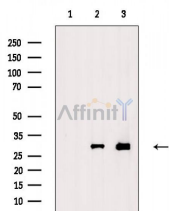


Histone H1.3 Ab

[Images\(1\)](#)

Cat.#: AF0082	Concn.: ~1mg/ml	Mol.Wt.: 30kDa
Size:	Source: Rabbit	Clonality: Polyclonal

Application:	WB 1:500-1:2000 *The optimal dilutions should be determined by the end user.
Reactivity:	Human, Mouse
Storage:	Rabbit IgG in phosphate buffered saline , pH 7.4, 150mM NaCl, 0.02% sodium azide and 50% glycerol. Store at -20 °C. Stable for 12 months from date of receipt.
Purification:	affinity chromatography
Immunogen:	A synthesized peptide derived from human Histone H1.3.
Uniprot:	P10412/P16402



Western blot analysis of extracts from various samples, using Histone H1.3 Ab.

Lane 1: Serum starvation treated P19 cells, blocked with antigen-specific peptides,

Lane 2: Serum starvation treated P19 cells,

Lane 3: Heat-shock treated 293 cells.

IMPORTANT: For western blot, incubate membrane with diluted primary Ab in 5% w/v milk , 1X TBS, 0.1% Tween@20 at 4°C with gentle shaking, overnight.

For Research Use Only. Not for use in diagnostic and therapeutic procedures. Not for resale without express authorization.