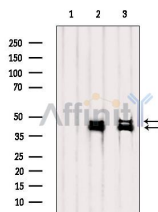


ERK1/2 Ab

[References\(11\)](#) [Images\(8\)](#)

Cat.#: AF6240	Concn.: ~1mg/ml	Mol.Wt.: 44kDa,42kDa
Size:	Source: Rabbit	Clonality: Polyclonal
Application:	WB 1:500-1:2000 *The optimal dilutions should be determined by the end user.	
Reactivity:	Human,Mouse,Rat	
Storage:	Rabbit IgG in phosphate buffered saline , pH 7.4, 150mM NaCl, 0.02% sodium azide and 50% glycerol. Store at -20 °C. Stable for 12 months from date of receipt.	
Purification:	The antiserum was purified by peptide affinity chromatography using SulfoLink™ Coupling Resin (Thermo Fisher Scientific).	
Immunogen:	A synthesized peptide derived from human ERK1/2, corresponding to a region within the internal amino acids.	
Uniprot:	P27361/P28482	
Description:	p42 MAP kinase plays a critical role in the regulation of cell growth and differentiation. Activated by a wide variety of extracellular signals including growth and neurotrophic factors, cytokines, hormones and neurotransmitters.	



Western blot analysis of extracts from various samples, using ERK1/2 Ab.
Lane 1: HeLa treated with blocking peptide;
Lane 2: HeLa;
Lane 3: 3T3.

IMPORTANT: For western blot, incubate membrane with diluted primary Ab in 5% w/v milk , 1X TBS, 0.1% Tween@20 at 4°C with gentle shaking, overnight.

For Research Use Only. Not for use in diagnostic and therapeutic procedures. Not for resale without express authorization.