

MARCKS Ab

[Images\(2\)](#)

Cat.#: AF6250	Concn.: ~1mg/ml	Mol.Wt.: 36,80 kDa
Size:	Source: Rabbit	Clonality: Polyclonal

Application: WB 1:500-1:2000, IF/ICC 1:100-1:500
*The optimal dilutions should be determined by the end user.

Reactivity: Human, Mouse, Rat

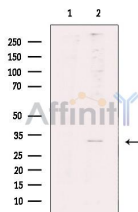
Storage: Rabbit IgG in phosphate buffered saline, pH 7.4, 150mM NaCl, 0.02% sodium azide and 50% glycerol. Store at -20 °C. Stable for 12 months from date of receipt.

Purification: The antiserum was purified by peptide affinity chromatography using SulfoLink™ Coupling Resin (Thermo Fisher Scientific).

Immunogen: A synthesized peptide derived from human MARCKS, corresponding to a region within the internal amino acids.

Uniprot: P29966

Description: MARCKS the most prominent cellular substrate of protein kinase C. Binds calmodulin, actin, and synapsin. A filamentous actin cross-linking protein. Critical for normal brain development.



Western blot analysis of extracts from Mouse brain tissue, using MARCKS Ab. The lane on the left was treated with blocking peptide.

IMPORTANT: For western blot, incubate membrane with diluted primary Ab in 5% w/v milk, 1X TBS, 0.1% Tween@20 at 4°C with gentle shaking, overnight.

For Research Use Only. Not for use in diagnostic and therapeutic procedures. Not for resale without express authorization.