

CDC25C Ab

[References\(6\)](#) [Images\(6\)](#)

Cat.#: AF6258 Concn.: ~1mg/ml Mol.Wt.: 60kDa
Size: Source: Rabbit Clonality: Polyclonal

Application: WB 1:500-1:2000, IHC 1:50-1:200, IF/ICC 1:100-1:500
*The optimal dilutions should be determined by the end user.

Reactivity: Human,Mouse

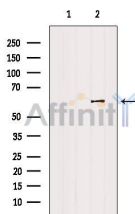
Storage: Rabbit IgG in phosphate buffered saline , pH 7.4, 150mM NaCl, 0.02% sodium azide and 50% glycerol. Store at -20 °C. Stable for 12 months from date of receipt.

Purification: The antiserum was purified by peptide affinity chromatography using SulfoLink™ Coupling Resin (Thermo Fisher Scientific).

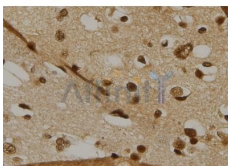
Immunogen: A synthesized peptide derived from human CDC25C, corresponding to a region within the internal amino acids.

Uniprot: P30307

Description: a member of the MPI phosphatase family. Activates the cyclin dependent kinase CDC2 by removing two phosphate groups and it is required for entry into mitosis. Shuttles between the nucleus and the cytoplasm due to nuclear localization and nuclear export signals.



Western blot analysis of extracts from HUVEC, using CDC25C Ab. The lane on the left was treated with blocking peptide.



AF6258 at 1/100 staining Human brain tissue by IHC-P. The sample was formaldehyde fixed and a heat mediated antigen retrieval step in citrate buffer was performed. The sample was then blocked and incubated with the Ab for 1.5 hours at 22°C. An HRP conjugated goat anti-rabbit Ab was used as the secondary Ab.

IMPORTANT: For western blot, incubate membrane with diluted primary Ab in 5% w/v milk , 1X TBS, 0.1% Tween@20 at 4°C with gentle shaking, overnight.



Affinity Biosciences

website: www.affbiotech.com

order: order@affbiotech.com

For Research Use Only. Not for use in diagnostic and therapeutic procedures. Not for resale without express authorization.