

IRS1 Ab

[References\(12\)](#) [Images\(12\)](#)

Cat.#: AF6273

Concn.: ~1mg/ml

Mol.Wt.: 180kDa

Size:

Source: Rabbit

Clonality: Polyclonal

Application:

WB 1:500-1:2000, IHC 1:50-1:200, IF/ICC 1:100-1:500

*The optimal dilutions should be determined by the end user.

Reactivity:

Human, Mouse, Rat, Monkey

Storage:

Rabbit IgG in phosphate buffered saline, pH 7.4, 150mM NaCl, 0.02% sodium azide and 50% glycerol. Store at -20 °C. Stable for 12 months from date of receipt.

Purification:

The antiserum was purified by peptide affinity chromatography using SulfoLink™ Coupling Resin (Thermo Fisher Scientific).

Immunogen:

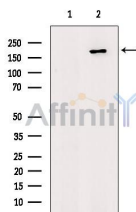
A synthesized peptide derived from human IRS1, corresponding to a region within the internal amino acids.

Uniprot:

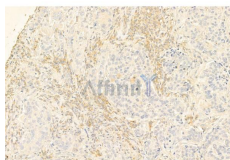
P35568

Description:

IRS-1 is an adaptor protein that is one of the major substrates of the insulin receptor kinase. Contains multiple tyrosine phosphorylation motifs that serve as docking sites for SH2-domain-containing proteins including phosphatidylinositol 3-kinase p85 subunit and GRB-2.



Western blot analysis of extracts from Rat brain, using IRS-1 Ab. The lane on the left was treated with blocking peptide.



AF6273 at 1/100 staining Human mammary cancer by IHC-P. The sample was formaldehyde fixed and a heat mediated antigen retrieval step in citrate buffer was performed. The sample was then blocked and incubated with the primary Ab at 4°C overnight. An HRP conjugated anti-Rabbit Ab was used as the secondary Ab.

IMPORTANT: For western blot, incubate membrane with diluted primary Ab in 5% w/v milk, 1X TBS, 0.1% Tween@20 at 4°C with gentle shaking, overnight.



Affinity Biosciences

website: www.affbiotech.com

order: order@affbiotech.com

For Research Use Only. Not for use in diagnostic and therapeutic procedures. Not for resale without express authorization.