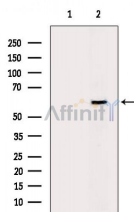


G3BP-1 Ab

[References\(1\)](#) [Images\(3\)](#)

Cat.#: AF6427	Concn.: ~1mg/ml	Mol.Wt.: 60kDa
Size:	Source: Rabbit	Clonality: Polyclonal

Application:	WB 1:500-1:2000, IHC 1:50-1:200 *The optimal dilutions should be determined by the end user.
Reactivity:	Human, Mouse
Storage:	Rabbit IgG in phosphate buffered saline , pH 7.4, 150mM NaCl, 0.02% sodium azide and 50% glycerol. Store at -20 °C. Stable for 12 months from date of receipt.
Purification:	The antiserum was purified by peptide affinity chromatography using SulfoLink™ Coupling Resin (Thermo Fisher Scientific).
Immunogen:	A synthesized peptide derived from human G3BP-1, corresponding to a region within the internal amino acids.
Uniprot:	Q13283
Description:	G3BP-1 an hnRNA-binding protein and endoribonuclease that participates in the Ras signal transduction pathway. A regulated effector of stress granule (SG) assembly. SGs are involved in mRNA sorting in the storing of untranslated mRNAs.



Western blot analysis of extracts from Mouse brain, using G3BP-1 Ab. The lane on the left was treated with blocking peptide.

IMPORTANT: For western blot, incubate membrane with diluted primary Ab in 5% w/v milk , 1X TBS, 0.1% Tween@20 at 4°C with gentle shaking, overnight.

For Research Use Only. Not for use in diagnostic and therapeutic procedures. Not for resale without express authorization.