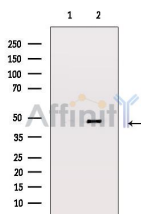


## MEK4/MKK4 Ab

[Images\(1\)](#)

Cat.#: AF6322	Concn.: ~1mg/ml	Mol.Wt.: 45kDa
Size:	Source: Rabbit	Clonality: Polyclonal
Application:	WB 1:500-1:2000, IHC 1:50-1:200 *The optimal dilutions should be determined by the end user.	
Reactivity:	Human, Mouse, Rat	
Storage:	Rabbit IgG in phosphate buffered saline, pH 7.4, 150mM NaCl, 0.02% sodium azide and 50% glycerol. Store at -20 °C. Stable for 12 months from date of receipt.	
Purification:	The antiserum was purified by peptide affinity chromatography using SulfoLink™ Coupling Resin (Thermo Fisher Scientific).	
Immunogen:	A synthesized peptide derived from human SEK1/MKK4, corresponding to a region within the internal amino acids.	
Uniprot:	P45985	
Description:	MKK4 dual specificity kinase of the STE7 family that phosphorylates and activates JNK1 and -2 as well as p38 but not ERK1 or -2. Mediates cellular responses to various cellular stresses and inflammatory cytokines. Phosphorylation by Akt inhibits MKK4 and suppresses stress-activated signal transduction.	



Western blot analysis of SEK1/MKK4 expression in HeLa whole cell lysates. The lane on the left was treated with the antigen-specific peptide.

**IMPORTANT:** For western blot, incubate membrane with diluted primary Ab in 5% w/v milk, 1X TBS, 0.1% Tween@20 at 4°C with gentle shaking, overnight.

For Research Use Only. Not for use in diagnostic and therapeutic procedures. Not for resale without express authorization.