

MKK3 Ab

[References\(4\)](#) [Images\(6\)](#)

Cat.#: AF6327	Concn.: ~1mg/ml	Mol.Wt.: 40kDa
Size:	Source: Rabbit	Clonality: Polyclonal

Application: WB 1:500-1:2000, IHC 1:50-1:200, IF/ICC 1:100-1:500
*The optimal dilutions should be determined by the end user.

Reactivity: Human, Mouse, Rat

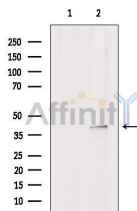
Storage: Rabbit IgG in phosphate buffered saline, pH 7.4, 150mM NaCl, 0.02% sodium azide and 50% glycerol. Store at -20 °C. Stable for 12 months from date of receipt.

Purification: The antiserum was purified by peptide affinity chromatography using SulfoLink™ Coupling Resin (Thermo Fisher Scientific).

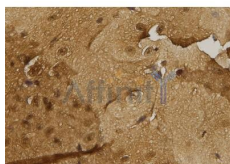
Immunogen: A synthesized peptide derived from human MKK3, corresponding to a region within the internal amino acids.

Uniprot: P46734

Description: The protein encoded by this gene is a dual specificity protein kinase that belongs to the MAP kinase kinase family. This kinase is activated by mitogenic and environmental stress, and participates in the MAP kinase-mediated signaling cascade. It phosphorylates and thus activates MAPK14/p38-MAPK. This kinase can be activated by insulin, and is necessary for the expression of glucose transporter.



Western blot analysis of extracts from 293t, using MKK3 Ab. The lane on the left was treated with blocking peptide.



AF6327 at 1/100 staining Mouse brain tissue by IHC-P. The sample was formaldehyde fixed and a heat mediated antigen retrieval step in citrate buffer was performed. The sample was then blocked and incubated with the Ab for 1.5 hours at 22°C. An HRP conjugated goat anti-rabbit Ab was used as the secondary Ab.

in 5% w/v milk , 1X TBS, 0.1% Tween@20 at 4°C with gentle shaking,
overnight.

For Research Use Only. Not for use in diagnostic and therapeutic
procedures. Not for resale without express authorization.