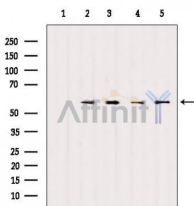


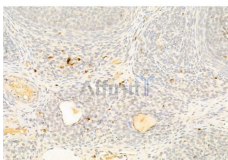
SOX9 Ab

[References\(23\)](#) [Images\(14\)](#)

Cat.#: AF6330	Concn.: ~1mg/ml	Mol.Wt.: 50,70kDa
Size:	Source: Rabbit	Clonality: Polyclonal
Application:	WB 1:500-1:2000, IHC 1:50-1:200, IF/ICC 1:100-1:500 *The optimal dilutions should be determined by the end user.	
Reactivity:	Human,Mouse,Rat,Monkey	
Storage:	Rabbit IgG in phosphate buffered saline , pH 7.4, 150mM NaCl, 0.02% sodium azide and 50% glycerol. Store at -20 °C. Stable for 12 months from date of receipt.	
Purification:	The antiserum was purified by peptide affinity chromatography using SulfoLink™ Coupling Resin (Thermo Fisher Scientific).	
Immunogen:	A synthesized peptide derived from human SOX9, corresponding to a region within the internal amino acids.	
Uniprot:	P48436	
Description:	SOX9 Plays an important role in the normal skeletal development. May regulate the expression of other genes involved in chondrogenesis by acting as a transcription factor for these genes. Defects in SOX9 are the cause of campomelic dysplasia (CMD1).	



Western blot analysis of extracts from various samples, using SOX9 Ab.
Lane 1: COS-7 treated with blocking peptide;
Lane 2: COS-7;
Lane 3: HeLa;
Lane 4: B16F10;
Lane 5: HepG2.



AF6330 at 1/100 staining Rat ovary tissue by IHC-P. The sample was formaldehyde fixed and a heat mediated antigen retrieval step in citrate buffer was performed. The sample was then blocked and incubated with the primary Ab at 4°C overnight. An HRP conjugated anti-Rabbit Ab was used as the secondary Ab.

IMPORTANT: For western blot, incubate membrane with diluted primary Ab in 5% w/v milk , 1X TBS, 0.1% Tween@20 at 4°C with gentle shaking, overnight.



Affinity Biosciences

website:www.affbiotech.com

order:order@affbiotech.com

For Research Use Only. Not for use in diagnostic and therapeutic procedures. Not for resale without express authorization.