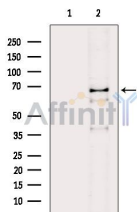


## Rel Ab

[Images\(3\)](#)

Cat.#: AF6395	Concn.: ~1mg/ml	Mol.Wt.: 78kDa
Size:	Source: Rabbit	Clonality: Polyclonal
Application:	WB 1:500-1:2000, IHC 1:50-1:200, IF/ICC 1:100-1:500 *The optimal dilutions should be determined by the end user.	
Reactivity:	Human	
Storage:	Rabbit IgG in phosphate buffered saline , pH 7.4, 150mM NaCl, 0.02% sodium azide and 50% glycerol. Store at -20 °C. Stable for 12 months from date of receipt.	
Purification:	The antiserum was purified by peptide affinity chromatography using SulfoLink™ Coupling Resin (Thermo Fisher Scientific).	
Immunogen:	A synthesized peptide derived from human Rel, corresponding to a region within the internal amino acids.	
Uniprot:	Q04864	
Description:	REL a proto-oncogenic transcription factor of the nuclear factor-kappaB (NFkB) group. There are five NFkB proteins in mammals (RelA/NFkB-p65, RelB, c-Rel, NF- $\kappa$ B1/NFkB-p105, and NF- $\kappa$ B2/NFkB-p100).	



Western blot analysis of extracts from EC304 cells(heat-shock treatment), using Rel Ab. The lane on the left was treated with blocking peptide.

**IMPORTANT:** For western blot, incubate membrane with diluted primary Ab in 5% w/v milk , 1X TBS, 0.1% Tween@20 at 4°C with gentle shaking, overnight.

For Research Use Only. Not for use in diagnostic and therapeutic procedures. Not for resale without express authorization.