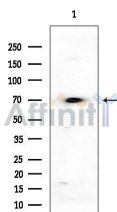


## NEUROD1 Ab

[References\(1\)](#) [Images\(2\)](#)

Cat.#: AF0109	Concn.: ~1mg/ml	Mol.Wt.: 36kDa
Size:	Source: Rabbit	Clonality: Polyclonal
Application:	WB 1:500-1:3000, IF/ICC 1:100-1:500 *The optimal dilutions should be determined by the end user.	
Reactivity:	Human,Mouse,Rat	
Storage:	Rabbit IgG in phosphate buffered saline , pH 7.4, 150mM NaCl, 0.02% sodium azide and 50% glycerol. Store at -20 °C. Stable for 12 months from date of receipt.	
Purification:	The antiserum was purified by peptide affinity chromatography using SulfoLink™ Coupling Resin (Thermo Fisher Scientific).	
Immunogen:	A synthesized peptide derived from human NEUROD1, corresponding to a region within N-terminal amino acids.	
Uniprot:	Q13562	
Description:	NEUROD1 Differentiation factor required for dendrite morphogenesis and maintenance in the cerebellar cortex. Transcriptional activator. Binds to the insulin gene E-box. Efficient DNA binding requires dimerization with another bHLH protein. Heterodimer with TCF3/E47. Interacts with RREB1.	



Western blot analysis of extracts from COLO205 cells(heat-shock treatment), using NEUROD1 Ab at 1/1000 dilution.  
Observed bands:70kD.

**IMPORTANT:** For western blot, incubate membrane with diluted primary Ab in 5% w/v milk , 1X TBS, 0.1% Tween@20 at 4°C with gentle shaking, overnight.

For Research Use Only. Not for use in diagnostic and therapeutic procedures. Not for resale without express authorization.