

ALK Ab

[References\(1\)](#) [Images\(1\)](#)

Cat.#: AF6489

Concn.: ~1mg/ml

Mol.Wt.: 170kDa

Size:

Source: Rabbit

Clonality: Polyclonal

Application:

WB 1:500-1:2000, IF/ICC 1:100-1:500

*The optimal dilutions should be determined by the end user.

Reactivity:

Human, Mouse

Storage:

Rabbit IgG in phosphate buffered saline, pH 7.4, 150mM NaCl, 0.02% sodium azide and 50% glycerol. Store at -20 °C. Stable for 12 months from date of receipt.

Purification:

The antiserum was purified by peptide affinity chromatography using SulfoLink™ Coupling Resin (Thermo Fisher Scientific).

Immunogen:

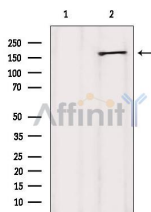
A synthesized peptide derived from human ALK, corresponding to a region within C-terminal amino acids.

Uniprot:

Q9UM73

Description:

a tyrosine kinase of the ALK family. Plays an important role in the development of the brain and exerts its effects on specific neurons in the nervous system. Translocated and expressed as a fusion protein in anaplastic lymphoma.



Western blot analysis of extracts from HeLa, using ALK Ab. Lane 1 was treated with the blocking peptide.

IMPORTANT: For western blot, incubate membrane with diluted primary Ab in 5% w/v milk, 1X TBS, 0.1% Tween@20 at 4°C with gentle shaking, overnight.

For Research Use Only. Not for use in diagnostic and therapeutic procedures. Not for resale without express authorization.