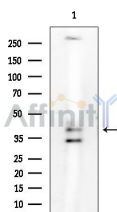


IKK gamma Ab

[Images\(2\)](#)

Cat.#: AF6496	Concn.: ~1mg/ml	Mol.Wt.: 43kDa
Size:	Source: Rabbit	Clonality: Polyclonal
Application:	WB 1:500-1:2000, IF/ICC 1:100-1:500 *The optimal dilutions should be determined by the end user.	
Reactivity:	Human	
Storage:	Rabbit IgG in phosphate buffered saline , pH 7.4, 150mM NaCl, 0.02% sodium azide and 50% glycerol. Store at -20 °C. Stable for 12 months from date of receipt.	
Purification:	The antiserum was purified by peptide affinity chromatography using SulfoLink™ Coupling Resin (Thermo Fisher Scientific).	
Immunogen:	A synthesized peptide derived from human IKK gamma, corresponding to a region within N-terminal amino acids.	
Uniprot:	Q9Y6K9	
Description:	Familial incontinentia pigmenti (IP) is a genodermatosis that segregates as an X-linked dominant disorder and is usually lethal prenatally in males (The International Incontinentia Pigmenti Consortium, 2000 [PubMed 10839543]). In affected females it causes highly variable abnormalities of the skin, hair, nails, teeth, eyes, and central nervous system.	



Western blot analysis of extracts from Rat brain, using IKK gamma Ab at 1/1000 dilution.
Observed bands:39kD.

IMPORTANT: For western blot, incubate membrane with diluted primary Ab in 5% w/v milk , 1X TBS, 0.1% Tween@20 at 4°C with gentle shaking, overnight.

For Research Use Only. Not for use in diagnostic and therapeutic procedures. Not for resale without express authorization.