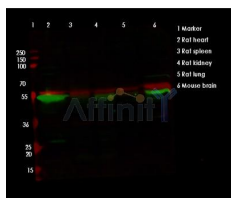


## TFEB Ab

[References\(6\)](#) [Images\(7\)](#)

Cat.#: AF7015	Concn.: ~1mg/ml	Mol.Wt.: 55~70kDa
Size:	Source: Rabbit	Clonality: Polyclonal
Application:	WB 1:500-1:2000, IHC 1:50-1:200 *The optimal dilutions should be determined by the end user.	
Reactivity:	Human, Mouse, Rat	
Storage:	Rabbit IgG in phosphate buffered saline, pH 7.4, 150mM NaCl, 0.02% sodium azide and 50% glycerol. Store at -20 °C. Stable for 12 months from date of receipt.	
Purification:	The antiserum was purified by peptide affinity chromatography using SulfoLink™ Coupling Resin (Thermo Fisher Scientific).	
Immunogen:	A synthesized peptide derived from human TFEB, corresponding to a region within N-terminal amino acids.	
Uniprot:	P19484	
Description:	TFEB Probable transcription factor binds to the USF/MLTF site and probably recognizes E-box sequences in the heavy-chain immunoglobulin enhancer.	



Western blot analysis of TFEB using various lysates Lanes 1 - 2: Merged signal (red and green). Green - AF7015 observed at 52 kDa. Red - loading control, T0023, observed at 55 kDa. Blots were developed with Goat Anti-Rabbit IgG(H+L) FITC-conjugated (S0008) and Goat Anti-Mouse IgG(H+L) Alexa Fluor 594-conjugated (S0005) secondary antibodies

**IMPORTANT:** For western blot, incubate membrane with diluted primary Ab in 5% w/v milk, 1X TBS, 0.1% Tween@20 at 4°C with gentle shaking, overnight.

For Research Use Only. Not for use in diagnostic and therapeutic procedures. Not for resale without express authorization.