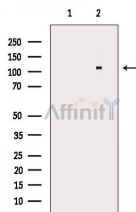


## TAF4 Ab

[Images\(2\)](#)

Cat.#: AF0305	Concn.: ~1mg/ml	Mol.Wt.: 110kDa
Size:	Source: Rabbit	Clonality: Polyclonal
Application:	WB 1:500-1:3000, IF/ICC 1:100-1:500 *The optimal dilutions should be determined by the end user.	
Reactivity:	Human, Mouse, Rat	
Storage:	Rabbit IgG in phosphate buffered saline, pH 7.4, 150mM NaCl, 0.02% sodium azide and 50% glycerol. Store at -20 °C. Stable for 12 months from date of receipt.	
Purification:	The antiserum was purified by peptide affinity chromatography using SulfoLink™ Coupling Resin (Thermo Fisher Scientific).	
Immunogen:	A synthesized peptide derived from human TAF4, corresponding to a region within C-terminal amino acids.	
Uniprot:	O00268/Q92750	
Description:	TAF4 Makes part of TFIID is a multimeric protein complex that plays a central role in mediating promoter responses to various activators and repressors. Potentiates transcriptional activation by the AF-2S of the retinoic acid, vitamin D3 and thyroid hormone. Belongs to the TAF4 family. TFIID is composed of TATA binding protein (TBP) and a number of TBP-associated factors (TAFs). Component of the TFIIC-HAT complex, at least composed of TAF5L, TAF6L, TADA3L, SUPT3H, TAF2, TAF4, TAF5, GCN5L2/GCN5, TAF10 and TRRAP.	



Western blot analysis of extracts from Mouse brain, using TAF4 Ab. The lane on the left was treated with blocking peptide.

**IMPORTANT:** For western blot, incubate membrane with diluted primary Ab in 5% w/v milk, 1X TBS, 0.1% Tween@20 at 4°C with gentle shaking, overnight.

For Research Use Only. Not for use in diagnostic and therapeutic procedures. Not for resale without express authorization.