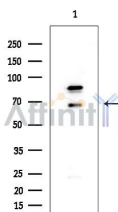


FOXP1 Ab

[Images\(7\)](#)

Cat.#: AF4082	Concn.: ~1mg/ml	Mol.Wt.: 82~90kd
Size:	Source: Rabbit	Clonality: Polyclonal

Application:	WB 1:500-1:1000 *The optimal dilutions should be determined by the end user.
Reactivity:	Human, Mouse, Rat
Storage:	Supplied at 1.0mg/mL in phosphate buffered saline (without Mg ²⁺ and Ca ²⁺), pH 7.4, 150mM NaCl, 0.02% sodium azide and 50% glycerol. Store at -20 °C. Stable for 12 months from date of receipt.
Purification:	The antiserum was purified by peptide affinity chromatography using SulfoLink™ Coupling Resin (Thermo Fisher Scientific).
Immunogen:	A synthesized peptide derived from human FOXP1, corresponding to a region within C-terminal amino acids.
Uniprot:	Q9H334
Description:	Transcriptional repressor. It plays an important role in the specification and differentiation of lung epithelium. Can act with CTBP1 to synergistically repress transcription but CTPBP1 is not essential. Essential transcriptional regulator of B cell development



Western blot analysis of extracts from EC304 cells (heat-shock treatment), using FOXP1 Ab at 1/1000 dilution.
Observed bands: 69kD.

IMPORTANT: For western blot, incubate membrane with diluted primary Ab in 5% w/v milk, 1X TBS, 0.1% Tween@20 at 4°C with gentle shaking, overnight.

For Research Use Only. Not for use in diagnostic and therapeutic procedures. Not for resale without express authorization.