

DDX4 Ab

[Images\(1\)](#)

Cat.#: AF4098	Concn.: ~1mg/ml	Mol.Wt.: 80kd
Size:	Source: Rabbit	Clonality: Polyclonal

Application: WB 1:500-1:1000
*The optimal dilutions should be determined by the end user.

Reactivity: Human,Mouse,Rat

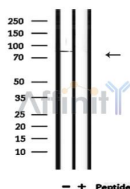
Storage: Supplied at 1.0mg/mL in phosphate buffered saline (without Mg²⁺ and Ca²⁺), pH 7.4, 150mM NaCl, 0.02% sodium azide and 50% glycerol. Store at -20 °C. Stable for 12 months from date of receipt.

Purification: The antiserum was purified by peptide affinity chromatography using SulfoLink™ Coupling Resin (Thermo Fisher Scientific).

Immunogen: A synthesized peptide derived from human DDX4, corresponding to a region within C-terminal amino acids.

Uniprot: Q9NQI0

Description: May play a role in germ cell development. May play a role in sperm motility.



Western blot analysis of extracts from mouse lung, using DDX4 Ab.

IMPORTANT: For western blot, incubate membrane with diluted primary Ab in 5% w/v milk , 1X TBS, 0.1% Tween@20 at 4°C with gentle shaking, overnight.

For Research Use Only. Not for use in diagnostic and therapeutic procedures. Not for resale without express authorization.