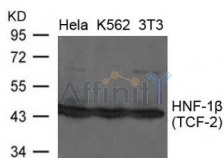


HNF1 beta Ab

[Images\(1\)](#)

Cat.#: AF4101	Concn.: ~1mg/ml	Mol.Wt.: 45,58,61kd
Size:	Source: Rabbit	Clonality: Polyclonal

Application:	WB 1:500-1:1000 *The optimal dilutions should be determined by the end user.
Reactivity:	Human, Mouse, Rat
Storage:	Supplied at 1.0mg/mL in phosphate buffered saline (without Mg ²⁺ and Ca ²⁺), pH 7.4, 150mM NaCl, 0.02% sodium azide and 50% glycerol. Store at -20 °C. Stable for 12 months from date of receipt.
Purification:	The antiserum was purified by peptide affinity chromatography using SulfoLink™ Coupling Resin (Thermo Fisher Scientific).
Immunogen:	A synthesized peptide derived from human HNF1 beta, corresponding to a region within the internal amino acids.
Uniprot:	P35680
Description:	Transcription factor, probably binds to the inverted palindrome 5'-GTTAATNATTAAC-3'.



Western blot analysis of extracts from HeLa, K562 and 3T3 cells using HNF-1b (TCF-2) Ab

IMPORTANT: For western blot, incubate membrane with diluted primary Ab in 5% w/v milk, 1X TBS, 0.1% Tween@20 at 4°C with gentle shaking, overnight.

For Research Use Only. Not for use in diagnostic and therapeutic procedures. Not for resale without express authorization.