

## OVOL1 Ab

[Images\(1\)](#)

|               |                 |                       |
|---------------|-----------------|-----------------------|
| Cat.#: AF0311 | Concn.: ~1mg/ml | Mol.Wt.: 33kDa        |
| Size:         | Source: Rabbit  | Clonality: Polyclonal |

**Application:** WB 1:500-1:3000, IF/ICC 1:100-1:500  
\*The optimal dilutions should be determined by the end user.

**Reactivity:** Human, Mouse

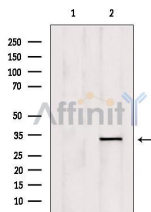
**Storage:** Rabbit IgG in phosphate buffered saline , pH 7.4, 150mM NaCl, 0.02% sodium azide and 50% glycerol. Store at -20 °C. Stable for 12 months from date of receipt.

**Purification:** The antiserum was purified by peptide affinity chromatography using SulfoLink™ Coupling Resin (Thermo Fisher Scientific).

**Immunogen:** A synthesized peptide derived from human OVOL1, corresponding to a region within N-terminal amino acids.

**Uniprot:** O14753

**Description:** OVOL1 Putative transcription factor. Involved in hair formation and spermatogenesis. May function in the differentiation and/or maintenance of the urogenital system.



Western blot analysis of extracts from mouse brain, using OVOL1 Ab. Lane 1 was treated with the blocking peptide.

**IMPORTANT:** For western blot, incubate membrane with diluted primary Ab in 5% w/v milk , 1X TBS, 0.1% Tween@20 at 4°C with gentle shaking, overnight.

For Research Use Only. Not for use in diagnostic and therapeutic procedures. Not for resale without express authorization.