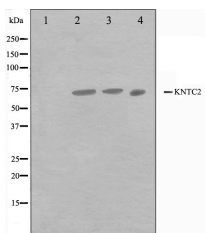


HEC1 Ab

[Images\(1\)](#)

Cat.#: AF0312	Concn.: ~1mg/ml	Mol.Wt.: 73kDa
Size:	Source: Rabbit	Clonality: Polyclonal
Application:	WB 1:500-1:3000, IF/ICC: 1:100-1:500 *The optimal dilutions should be determined by the end user.	
Reactivity:	Human,Mouse	
Storage:	PBS, pH 7.4,50% glycerol. Store at -20 °C. Stable for 12 months from date of receipt.	
Purification:	The antiserum was purified by peptide affinity chromatography using SulfoLink™ Coupling Resin (Thermo Fisher Scientific).	
Immunogen:	A synthesized peptide derived from human HEC1, corresponding to a region within C-terminal amino acids.	
Uniprot:	O14777	
Description:	HEC1 plays an essential role in chromosome segregation by interacting through its coiled-coil domains with several proteins that modulate the G2/M phase. Phosphorylation by Nek2 is essential for faithful chromosome segregation. Required for the recruitment of Mps1 kinase and Mad1/Mad2 complexes to kinetochores.	



Western blot analysis on Jurkat,A549 and HuvEc cell lysates using HEC1 Ab.The lane on the left was treated with the antigen-specific peptide.

IMPORTANT: For western blot, incubate membrane with diluted primary Ab in 5% w/v milk , 1X TBS, 0.1% Tween@20 at 4°C with gentle shaking, overnight.

For Research Use Only. Not for use in diagnostic and therapeutic procedures. Not for resale without express authorization.