

BCKD Ab

[Images\(2\)](#)

| | | |
|---------------|-----------------|-----------------------|
| Cat.#: AF0314 | Concn.: ~1mg/ml | Mol.Wt.: 46kDa |
| Size: | Source: Rabbit | Clonality: Polyclonal |

Application: WB 1:500-1:3000, IF/ICC: 1:100-1:500
*The optimal dilutions should be determined by the end user.

Reactivity: Human, Mouse, Rat

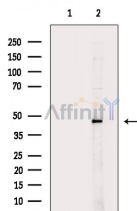
Storage: Rabbit IgG in phosphate buffered saline, pH 7.4, 150mM NaCl, 0.02% sodium azide and 50% glycerol. Store at -20 °C. Stable for 12 months from date of receipt.

Purification: The antiserum was purified by peptide affinity chromatography using SulfoLink™ Coupling Resin (Thermo Fisher Scientific).

Immunogen: A synthesized peptide derived from human BCKD, corresponding to a region within N-terminal amino acids.

Uniprot: O14874

Description: BCKDK an atypical protein kinase associated with the mitochondrial matrix. Contains a HATPase_c domain, found in several ATP-binding proteins including protein histidine kinases (PHKs), PHDKs, DNA gyrase B, topoisomerases, heat shock proteins, and DNA mismatch repair proteins. Unlike PHKs, BCK dimerizes through direct interaction of two opposing nucleotide-binding domains.



Western blot analysis of extracts from Mouse kidney, using BCKD Ab. The lane on the left was treated with blocking peptide.

IMPORTANT: For western blot, incubate membrane with diluted primary Ab in 5% w/v milk, 1X TBS, 0.1% Tween@20 at 4°C with gentle shaking, overnight.

For Research Use Only. Not for use in diagnostic and therapeutic procedures. Not for resale without express authorization.