

Histone H1.0 Ab

[Images\(1\)](#)

Cat.#: DF3073	Concn.: ~1mg/ml	Mol.Wt.: 20 KD
Size:	Source: Rabbit	Clonality: Polyclonal

Application: WB 1:500-1:1000, IF/ICC 1:100-1:500

*The optimal dilutions should be determined by the end user.

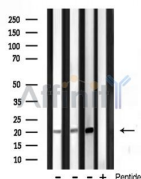
Reactivity: Human, Mouse, Rat

Storage: Rabbit IgG in phosphate buffered saline, pH 7.4, 150mM NaCl, 0.02% sodium azide and 50% glycerol. Store at -20 °C. Stable for 12 months from date of receipt.

Purification: The antiserum was purified by peptide affinity chromatography using SulfoLink™ Coupling Resin (Thermo Fisher Scientific).

Immunogen: A synthesized peptide derived from human Histone H1.0, corresponding to a region within the internal amino acids.

Uniprot: P07305



Western blot analysis of extracts from various samples, using Histone H1.0 Ab.

Lane 1: Rat liver lysates;

Lane 2: Mouse brain lysates;

Lane 3: Mouse lung lysates;

Lane 4: Mouse lung lysates treated with blocking peptide;

IMPORTANT: For western blot, incubate membrane with diluted primary Ab in 5% w/v milk, 1X TBS, 0.1% Tween@20 at 4°C with gentle shaking, overnight.

For Research Use Only. Not for use in diagnostic and therapeutic procedures. Not for resale without express authorization.