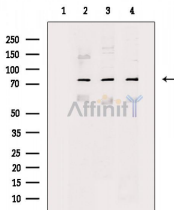


SKIL Ab

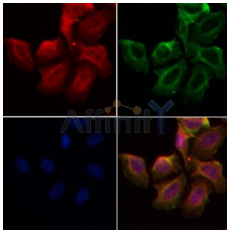
[References\(2\)](#) [Images\(4\)](#)

Cat.#: DF3088	Concn.: ~1mg/ml	Mol.Wt.: 77 KD
Size:	Source: Rabbit	Clonality: Polyclonal
Application:	WB 1:500-1:1000, IF/ICC 1:100-1:500 *The optimal dilutions should be determined by the end user.	
Reactivity:	Human,Mouse,Rat	
Storage:	Rabbit IgG in phosphate buffered saline , pH 7.4, 150mM NaCl, 0.02% sodium azide and 50% glycerol. Store at -20 °C. Stable for 12 months from date of receipt.	
Purification:	The antiserum was purified by peptide affinity chromatography using SulfoLink™ Coupling Resin (Thermo Fisher Scientific).	
Immunogen:	A synthesized peptide derived from human SKIL, corresponding to a region within C-terminal amino acids.	
Uniprot:	P12757	



Western blot analysis of extracts from various samples, using SKIL Ab.

- Lane 1: Rat brain, blocked with antigen-specific peptides,
- Lane 2: Rat brain,
- Lane 3: Rat kidney,
- Lane 4: Mouse brain.



DF3088 staining HeLa by IF/ICC. The samples were fixed with PFA and permeabilized in 0.1% Triton X-100, then blocked in 10% serum for 45 minutes at 25°C. Samples were then incubated with primary Ab(DF3088 1:200) and mouse anti-beta tubulin Ab(T0023 1:200) for 1 hour at 37°C. An AlexaFluor594 conjugated goat anti-rabbit IgG(H+L) Ab(Red) and an AlexaFluor488 conjugated goat anti-mouse IgG(H+L) Ab(Green) were used as the secondary Ab.

The nuclear counter stain is DAPI(blue).

IMPORTANT: For western blot, incubate membrane with diluted primary Ab in 5% w/v milk , 1X TBS, 0.1% Tween@20 at 4°C with gentle shaking, overnight.

For Research Use Only. Not for use in diagnostic and therapeutic procedures. Not for resale without express authorization.