

TRI18 Ab

[Images\(2\)](#)

Cat.#: AF0321	Concn.: ~1mg/ml	Mol.Wt.: 75kDa
Size:	Source: Rabbit	Clonality: Polyclonal

Application: WB 1:500-1:3000, IHC 1:50-1:200, IF/ICC: 1:100-1:500
*The optimal dilutions should be determined by the end user.

Reactivity: Human, Mouse, Rat

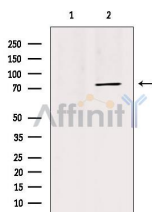
Storage: Rabbit IgG in phosphate buffered saline, pH 7.4, 150mM NaCl, 0.02% sodium azide and 50% glycerol. Store at -20 °C. Stable for 12 months from date of receipt.

Purification: The antiserum was purified by peptide affinity chromatography using SulfoLink™ Coupling Resin (Thermo Fisher Scientific).

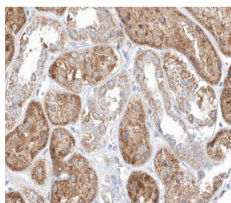
Immunogen: A synthesized peptide derived from human TRI18, corresponding to a region within N-terminal amino acids.

Uniprot: O15344

Description: MID1 May have E3 ubiquitin ligase activity which targets the catalytic subunit of protein phosphatase 2 for degradation. Belongs to the TRIM/RBCC family. A retroviral element acts as an alternative tissue-specific promoter for this gene. The LTR of an HERV-E element enhances the expression in placenta and embryonic kidney. Homodimer or heterodimer with MID2. Interacts with IGBP1. 2 isoforms of the human protein are produced by alternative splicing.



Western blot analysis of extracts from HepG2, using TRI18 Ab. Lane 1 was treated with the blocking peptide.



AF0321 at 1/100 staining human kidney tissue sections by IHC-P. The tissue was formaldehyde fixed and a heat mediated antigen retrieval step in citrate buffer was performed. The tissue was then blocked and incubated with the Ab for 1.5 hours at 22°C. An HRP conjugated goat anti-rabbit Ab was used as the secondary Ab.

IMPORTANT: For western blot, incubate membrane with diluted primary Ab in 5% w/v milk , 1X TBS, 0.1% Tween@20 at 4°C with gentle shaking, overnight.

For Research Use Only. Not for use in diagnostic and therapeutic procedures. Not for resale without express authorization.