

## NFYA Ab

[References\(1\)](#) [Images\(7\)](#)

Cat.#: DF3125                      Concn.: ~1mg/ml                      Mol.Wt.: 43 KD  
Size:                                      Source: Rabbit                      Clonality: Polyclonal

Application:                      WB 1:500-1:1000, IF/ICC 1:100-1:500, IHC 1:50-1:200  
\*The optimal dilutions should be determined by the end user.

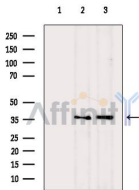
Reactivity:                      Human,Mouse,Rat,Monkey

Storage:                      Rabbit IgG in phosphate buffered saline , pH 7.4, 150mM NaCl, 0.02% sodium azide and 50% glycerol. Store at -20 °C. Stable for 12 months from date of receipt.

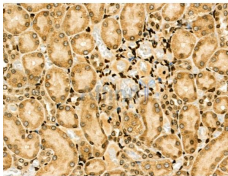
Purification:                      The antiserum was purified by peptide affinity chromatography using SulfoLink™ Coupling Resin (Thermo Fisher Scientific).

Immunogen:                      A synthesized peptide derived from human NFYA, corresponding to a region within C-terminal amino acids.

Uniprot:                      P23511



Western blot analysis of extracts from various samples, using NFYA Ab.  
Lane 1: Vero cells(h<sub>2</sub>O<sub>2</sub> treatment), blocked with antigen-specific peptides.  
Lane 2: Vero cells(h<sub>2</sub>O<sub>2</sub> treatment).  
Lane 3: Hela cells(heat-shock treatment).



DF3125 at 1/100 staining Rat kidney tissue by IHC-P. The sample was formaldehyde fixed and a heat mediated antigen retrieval step in citrate buffer was performed. The sample was then blocked and incubated with the primary Ab at 4°C overnight. An HRP conjugated anti-Rabbit Ab was used as the secondary Ab.

**IMPORTANT:** For western blot, incubate membrane with diluted primary Ab in 5% w/v milk , 1X TBS, 0.1% Tween@20 at 4°C with gentle shaking, overnight.

For Research Use Only. Not for use in diagnostic and therapeutic procedures. Not for resale without express authorization.