

Gab2 Ab

[Images\(3\)](#)

Cat.#: AF0106	Concn.: ~1mg/ml	Mol.Wt.: 97kDa
Size:	Source: Rabbit	Clonality: Polyclonal

Application: WB 1:500-1:3000, IHC 1:50-1:200
*The optimal dilutions should be determined by the end user.

Reactivity: Human,Mouse,Rat

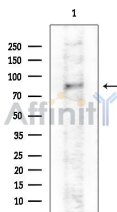
Storage: Rabbit IgG in phosphate buffered saline , pH 7.4, 150mM NaCl, 0.02% sodium azide and 50% glycerol. Store at -20 °C. Stable for 12 months from date of receipt.

Purification: The antiserum was purified by peptide affinity chromatography using SulfoLink™ Coupling Resin (Thermo Fisher Scientific).

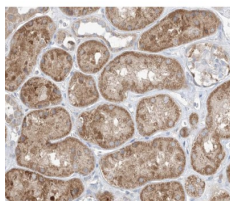
Immunogen: A synthesized peptide derived from human Gab2, corresponding to a region within C-terminal amino acids.

Uniprot: Q9UQC2

Description: Gab2 an adaptor protein of the GRB2-associated binding protein family. Plays important roles in regulating the growth, differentiation, and function of many hematopoietic cell types.



Western blot analysis of extracts from COLO205 cells(heat-shock treatment), using Gab2 Ab at 1/1000 dilution.
Observed bands:85kD.



AF0106 at 1/100 staining human kidney tissue sections by IHC-P. The tissue was formaldehyde fixed and a heat mediated antigen retrieval step in citrate buffer was performed. The tissue was then blocked and incubated with the Ab for 1.5 hours at 22°C. An HRP conjugated goat anti-rabbit Ab was used as the secondary Ab.

IMPORTANT: For western blot, incubate membrane with diluted primary Ab in 5% w/v milk , 1X TBS, 0.1% Tween@20 at 4°C with gentle shaking, overnight.



Affinity Biosciences

website: www.affbiotech.com

order: order@affbiotech.com

For Research Use Only. Not for use in diagnostic and therapeutic procedures. Not for resale without express authorization.