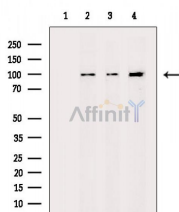


## Actinin alpha 2/3 Ab

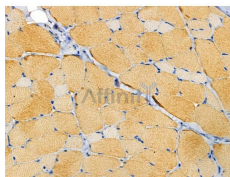
[Images\(7\)](#)

Cat.#: DF3163	Concn.: ~1mg/ml	Mol.Wt.: 103 KD
Size:	Source: Rabbit	Clonality: Polyclonal
Application:	WB 1:500-1:1000, IHC 1:50-1:200, IF/ICC 1:100-1:500 *The optimal dilutions should be determined by the end user.	
Reactivity:	Human, Mouse, Rat	
Storage:	Rabbit IgG in phosphate buffered saline, pH 7.4, 150mM NaCl, 0.02% sodium azide and 50% glycerol. Store at -20 °C. Stable for 12 months from date of receipt.	
Purification:	The antiserum was purified by peptide affinity chromatography using SulfoLink™ Coupling Resin (Thermo Fisher Scientific).	
Immunogen:	A synthesized peptide derived from human Actinin alpha 2/3, corresponding to a region within N-terminal amino acids.	
Uniprot:	P35609/Q08043	



Western blot analysis of extracts from various samples, using Actinin alpha 2/3 Ab.

Lane 1: Mouse brain, blocked with antigen-specific peptides,  
Lane 2: Mouse brain,  
Lane 3: Hela cells (serum starvation treatment),  
Lane 4: RAW264.7 cells (LPS 4h treatment).



DF3163 at 1/100 staining Rat skin tissue by IHC-P. The sample was formaldehyde fixed and a heat mediated antigen retrieval step in citrate buffer was performed. The sample was then blocked and incubated with the primary Ab at 4°C overnight. An HRP conjugated anti-Rabbit Ab was used as the secondary Ab.

**IMPORTANT:** For western blot, incubate membrane with diluted primary Ab in 5% w/v milk, 1X TBS, 0.1% Tween@20 at 4°C with gentle shaking, overnight.

For Research Use Only. Not for use in diagnostic and therapeutic procedures. Not for resale without express authorization.