

## MCL-1 Ab

[Images\(1\)](#)

Cat.#: BF0080	Concn.: ~1mg/ml	Mol.Wt.: 37kDa
Size:	Source: Mouse	Clonality: Monoclonal
Application:	ELISA 1:10000, WB 1:500-1:2000, IHC 1:200-1:1000, IF/ICC 1:200-1:1000 *The optimal dilutions should be determined by the end user.	
Reactivity:	Human	
Storage:	Mouse IgG1 in phosphate buffered saline (without Mg <sup>2+</sup> and Ca <sup>2+</sup> ), pH 7.4, 150mM NaCl, 0.02% sodium azide and 50% glycerol. Store at -20 °C. Stable for 12 months from date of receipt.	
Purification:	Affinity-chromatography.	
Immunogen:	Purified recombinant fragment of human MCL-1 expressed in E. Coli.	
Uniprot:	Q07820	
Description:	Mcl-1 (Myeloid cell leukemia-1) is Bcl-2-related and was identified as an early-induction gene that increased in expression during the differentiation of human myeloblastic leukemia cell ML-1, or exposure to different DNA damaging agents. The level of Mcl-1 is decreased in peripheral B lymphocytes undergoing apoptosis following treatment with apoptotic stimuli such as TGF-alpha 1 and forskolin.	

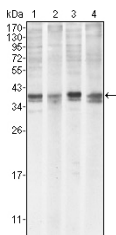


Figure 1: Western blot analysis using MCL1 mouse mAb against Hela (1), BCBL-1 (2), Jurkat (3) and HL60 (4) cell lysate.

**IMPORTANT:** For western blot, incubate membrane with diluted primary Ab in 5% w/v milk, 1X TBS, 0.1% Tween@20 at 4°C with gentle shaking, overnight.

For Research Use Only. Not for use in diagnostic and therapeutic procedures. Not for resale without express authorization.