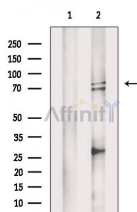


## MELK Ab

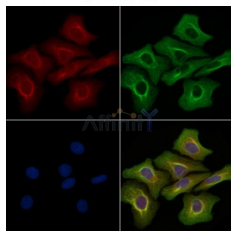
[References\(1\)](#) [Images\(4\)](#)

|               |                 |                       |
|---------------|-----------------|-----------------------|
| Cat.#: DF3278 | Concn.: ~1mg/ml | Mol.Wt.: 75 KD        |
| Size:         | Source: Rabbit  | Clonality: Polyclonal |

|               |  |
|---------------|--|
| Application:  | WB 1:500-1:1000, IF/ICC 1:100-1:500<br>*The optimal dilutions should be determined by the end user.  |
| Reactivity:   | Human  |
| Storage:      | Rabbit IgG in phosphate buffered saline , pH 7.4, 150mM NaCl, 0.02% sodium azide and 50% glycerol. Store at -20 °C. Stable for 12 months from date of receipt. |
| Purification: | The antiserum was purified by peptide affinity chromatography using SulfoLink™ Coupling Resin (Thermo Fisher Scientific).                                      |
| Immunogen:    | A synthesized peptide derived from human MELK, corresponding to a region within the internal amino acids.  |
| Uniprot:      | Q14680   |



Western blot analysis of extracts from HeLa cells, using MELK Ab. The lane on the left was treated with blocking peptide.



DF3278 staining HeLa cells by IF/ICC. The samples were fixed with PFA and permeabilized in 0.1% Triton X-100, then blocked in 10% serum for 45 minutes at 25°C. Samples were then incubated with primary Ab(DF3278) and mouse anti-beta tubulin Ab(T0023) for 1 hour at 37°C. An AlexaFluor594 conjugated goat anti-rabbit IgG(H+L) Ab(Red) and an AlexaFluor488 conjugated goat anti-mouse IgG(H+L) Ab(Green) were used as the secondary Ab.

The nuclear counter stain is DAPI (blue).

**IMPORTANT:** For western blot, incubate membrane with diluted primary Ab in 5% w/v milk , 1X TBS, 0.1% Tween@20 at 4°C with gentle shaking, overnight.

For Research Use Only. Not for use in diagnostic and therapeutic procedures. Not for resale without express authorization.