

## HLX1 Ab

[Images\(2\)](#)

Cat.#: DF3279	Concn.: ~1mg/ml	Mol.Wt.: 75 KD
Size:	Source: Rabbit	Clonality: Polyclonal

**Application:** WB 1:500-1:1000, IF/ICC 1:100-1:500  
\*The optimal dilutions should be determined by the end user.

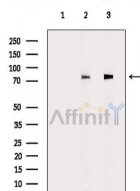
**Reactivity:** Human, Mouse, Rat

**Storage:** Rabbit IgG in phosphate buffered saline, pH 7.4, 150mM NaCl, 0.02% sodium azide and 50% glycerol. Store at -20 °C. Stable for 12 months from date of receipt.

**Purification:** The antiserum was purified by peptide affinity chromatography using SulfoLink™ Coupling Resin (Thermo Fisher Scientific).

**Immunogen:** A synthesized peptide derived from human HLX1, corresponding to a region within the internal amino acids.

**Uniprot:** Q14774



Western blot analysis of extracts from various samples, using HLX1 Ab.  
Lane 1: 293 cells, blocked with antigen-specific peptides,  
Lane 2: 293 cells,  
Lane 3: Mouse kidney.

**IMPORTANT:** For western blot, incubate membrane with diluted primary Ab in 5% w/v milk, 1X TBS, 0.1% Tween@20 at 4°C with gentle shaking, overnight.

For Research Use Only. Not for use in diagnostic and therapeutic procedures. Not for resale without express authorization.