

## MOBKL2A/B Ab

[Images\(1\)](#)

Cat.#: DF3395  
Size:

Concn.: ~1mg/ml  
Source: Rabbit

Mol.Wt.: 25 KD  
Clonality: Polyclonal

Application:

WB 1:500-1:1000, IF/ICC 1:100-1:500

\*The optimal dilutions should be determined by the end user.

Reactivity:

Human, Mouse

Storage:

Rabbit IgG in phosphate buffered saline, pH 7.4, 150mM NaCl, 0.02% sodium azide and 50% glycerol. Store at -20 °C. Stable for 12 months from date of receipt.

Purification:

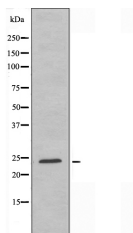
The antiserum was purified by peptide affinity chromatography using SulfoLink™ Coupling Resin (Thermo Fisher Scientific).

Immunogen:

A synthesized peptide derived from human MOBKL2A/B, corresponding to a region within N-terminal amino acids.

Uniprot:

Q96BX8/Q86TA1



Western blot analysis of extracts from 3T3 cells, using MOBKL2A/B Ab.

**IMPORTANT:** For western blot, incubate membrane with diluted primary Ab in 5% w/v milk, 1X TBS, 0.1% Tween@20 at 4°C with gentle shaking, overnight.

For Research Use Only. Not for use in diagnostic and therapeutic procedures. Not for resale without express authorization.