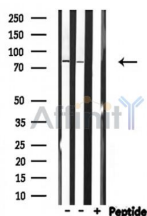


MARK1/2/3/4 Ab

[Images\(1\)](#)

| | | |
|---------------|---|-----------------------|
| Cat.#: DF3457 | Concn.: ~1mg/ml | Mol.Wt.: 89 KD |
| Size: | Source: Rabbit | Clonality: Polyclonal |
| Application: | WB 1:500-1:1000 *The optimal dilutions should be determined by the end user. | |
| Reactivity: | Human, Mouse, Rat | |
| Storage: | Rabbit IgG in phosphate buffered saline, pH 7.4, 150mM NaCl, 0.02% sodium azide and 50% glycerol. Store at -20 °C. Stable for 12 months from date of receipt. | |
| Purification: | The antiserum was purified by peptide affinity chromatography using SulfoLink™ Coupling Resin (Thermo Fisher Scientific). | |
| Immunogen: | A synthesized peptide derived from human MARK1/2/3/4, corresponding to a region within the internal amino acids. | |
| Uniprot: | Q9P0L2/Q7KZI7/P27448/Q96L34 | |



Western blot analysis of extracts from various samples, using MARK Ab.

Lane 1: Rat spleen lysates;

Lane 2: Rat brain lysates;

Lane 3: Rat brain lysates treated with blocking peptide;

IMPORTANT: For western blot, incubate membrane with diluted primary Ab in 5% w/v milk, 1X TBS, 0.1% Tween@20 at 4°C with gentle shaking, overnight.

For Research Use Only. Not for use in diagnostic and therapeutic procedures. Not for resale without express authorization.