

## Cytochrome P450 26C1 Ab

[Images\(1\)](#)

Cat.#: DF3570    Concn.: ~1mg/ml    Mol.Wt.: 0 KD  
Size:    Source: Rabbit    Clonality: Polyclonal

Application:    IHC 1:50-1:200, WB 1:500-1:2000  
\*The optimal dilutions should be determined by the end user.

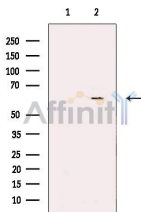
Reactivity:    Human,Mouse

Storage:    Rabbit IgG in phosphate buffered saline , pH 7.4, 150mM NaCl, 0.02% sodium azide and 50% glycerol. Store at -20 °C. Stable for 12 months from date of receipt.

Purification:    The antiserum was purified by peptide affinity chromatography using SulfoLink™ Coupling Resin (Thermo Fisher Scientific).

Immunogen:    A synthesized peptide derived from human Cytochrome P450 26C1, corresponding to a region within the internal amino acids.

Uniprot:    Q6V0L0



Western blot analysis of extracts from Mouse brain, using Cytochrome P450 26C1 Ab. The lane on the left was treated with blocking peptide.

**IMPORTANT:** For western blot, incubate membrane with diluted primary Ab in 5% w/v milk , 1X TBS, 0.1% Tween@20 at 4°C with gentle shaking, overnight.

For Research Use Only. Not for use in diagnostic and therapeutic procedures. Not for resale without express authorization.