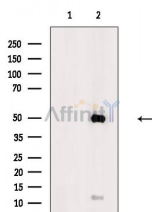


Cytochrome P450 2C8/9/18/19 Ab

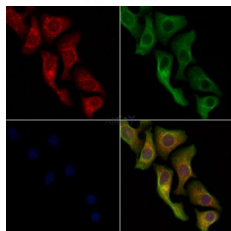
[Images\(3\)](#)

| | | |
|---------------|---|------------------------|
| Cat.#: DF3576 | Concn.: ~1mg/ml | Mol.Wt.: 50~60kD, 75kD |
| Size: | Source: Rabbit | Clonality: Polyclonal |
| Application: | WB 1:500-1:1000, IF/ICC 1:100-1:500 *The optimal dilutions should be determined by the end user. | |
| Reactivity: | Human, Mouse | |
| Storage: | Rabbit IgG in phosphate buffered saline, pH 7.4, 150mM NaCl, 0.02% sodium azide and 50% glycerol. Store at -20 °C. Stable for 12 months from date of receipt. | |
| Purification: | The antiserum was purified by peptide affinity chromatography using SulfoLink™ Coupling Resin (Thermo Fisher Scientific). | |
| Immunogen: | A synthesized peptide derived from human Cytochrome P450 2C8/9/18/19, corresponding to a region within the internal amino acids. | |
| Uniprot: | P33260/P10632/P11712/P33261 | |



Western blot analysis of extracts from Mouse liver, using Cytochrome P450 2C8/9/18/19 Ab. The lane on the left was treated with blocking peptide.

Observed bands: 45-55kDa



DF3576 staining HeLa cells by IF/ICC. The samples were fixed with PFA and permeabilized in 0.1% Triton X-100, then blocked in 10% serum for 45 minutes at 25°C. Samples were then incubated with primary Ab(#DF3576) and mouse anti-beta tubulin Ab(#T0023) for 1 hour at 37°C. An AlexaFluor594 conjugated goat anti-rabbit IgG Ab(Red) and an AlexaFluor488 conjugated goat anti-mouse IgG Ab(Green) were used as the secondary Ab. The nuclear counter stain is DAPI (blue).

IMPORTANT: For western blot, incubate membrane with diluted primary Ab in 5% w/v milk, 1X TBS, 0.1% Tween@20 at 4°C with gentle shaking, overnight.

For Research Use Only. Not for use in diagnostic and therapeutic procedures. Not for resale without express authorization.