

## Cytochrome P450 4Z1 Ab

[References\(4\)](#) [Images\(2\)](#)

Cat.#: DF3590	Concn.: ~1mg/ml	Mol.Wt.: 59 KD
Size:	Source: Rabbit	Clonality: Polyclonal

Application: IHC 1:50-1:200, IF/ICC 1:100-1:500, WB 1:500-1:2000  
\*The optimal dilutions should be determined by the end user.

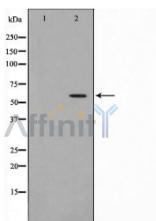
Reactivity: Human, Mouse, Rat

Storage: Rabbit IgG in phosphate buffered saline, pH 7.4, 150mM NaCl, 0.02% sodium azide and 50% glycerol. Store at -20 °C. Stable for 12 months from date of receipt.

Purification: The antiserum was purified by peptide affinity chromatography using SulfoLink™ Coupling Resin (Thermo Fisher Scientific).

Immunogen: A synthesized peptide derived from human Cytochrome P450 4Z1, corresponding to a region within N-terminal amino acids.

Uniprot: Q86W10



Western blot analysis of extracts from rat brain cells, using Cytochrome P450 4Z1 Ab. The lane on the left was treated with the antigen-specific peptide.

**IMPORTANT:** For western blot, incubate membrane with diluted primary Ab in 5% w/v milk, 1X TBS, 0.1% Tween@20 at 4°C with gentle shaking, overnight.

For Research Use Only. Not for use in diagnostic and therapeutic procedures. Not for resale without express authorization.