

## FOXJ1 Ab

[References\(1\)](#) [Images\(3\)](#)

Cat.#: AF0372                      Concn.: ~1mg/ml                      Mol.Wt.: 60kDa  
Size:                                      Source: Rabbit                              Clonality: Polyclonal

Application:                      WB 1:500-1:3000, IF/ICC 1:100-1:500, IHC 1:50-200  
\*The optimal dilutions should be determined by the end user.

Reactivity:                      Human,Mouse,Rat

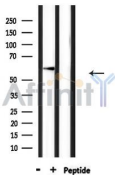
Storage:                              Rabbit IgG in phosphate buffered saline , pH 7.4, 150mM NaCl, 0.02% sodium azide and 50% glycerol. Store at -20 °C. Stable for 12 months from date of receipt.

Purification:                      The antiserum was purified by peptide affinity chromatography using SulfoLink™ Coupling Resin (Thermo Fisher Scientific).

Immunogen:                      A synthesized peptide derived from human FOXJ1, corresponding to a region within the internal amino acids.

Uniprot:                              Q92949

Description:                      FOXJ1 May play an important role in cell fate determination during lung development and in spermatogenesis. Note:



Western blot analysis of extracts from rat brain, using FOXJ1 Ab.

**IMPORTANT:** For western blot, incubate membrane with diluted primary Ab in 5% w/v milk , 1X TBS, 0.1% Tween@20 at 4°C with gentle shaking, overnight.

For Research Use Only. Not for use in diagnostic and therapeutic procedures. Not for resale without express authorization.