

## IL17RA Ab

[References\(5\)](#) [Images\(7\)](#)

|               |                 |                       |
|---------------|-----------------|-----------------------|
| Cat.#: DF3602 | Concn.: ~1mg/ml | Mol.Wt.: 90 KD        |
| Size:         | Source: Rabbit  | Clonality: Polyclonal |

Application: WB 1:500-1:1000, IF/ICC 1:100-1:500, IHC 1:50-1:200  
\*The optimal dilutions should be determined by the end user.

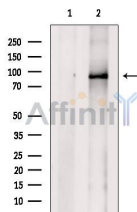
Reactivity: Human, Mouse, Rat

Storage: Rabbit IgG in phosphate buffered saline, pH 7.4, 150mM NaCl, 0.02% sodium azide and 50% glycerol. Store at -20 °C. Stable for 12 months from date of receipt.

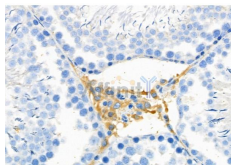
Purification: The antiserum was purified by peptide affinity chromatography using SulfoLink™ Coupling Resin (Thermo Fisher Scientific).

Immunogen: A synthesized peptide derived from human IL17RA, corresponding to a region within N-terminal amino acids.

Uniprot: Q96F46



Western blot analysis of extracts from P19 cells, using IL17RA Ab. The lane on the left was treated with blocking peptide.



DF3602 at 1/100 staining Rat testis tissue by IHC-P. The sample was formaldehyde fixed and a heat mediated antigen retrieval step in citrate buffer was performed. The sample was then blocked and incubated with the primary Ab at 4°C overnight. An HRP conjugated anti-Rabbit Ab was used as the secondary Ab.

**IMPORTANT:** For western blot, incubate membrane with diluted primary Ab in 5% w/v milk, 1X TBS, 0.1% Tween@20 at 4°C with gentle shaking, overnight.

For Research Use Only. Not for use in diagnostic and therapeutic procedures. Not for resale without express authorization.