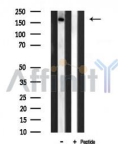


## FYCO1 Ab

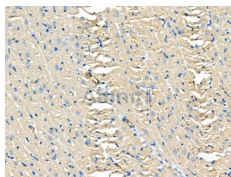
[Images\(2\)](#)

Cat.#: AF0388	Concn.: ~1mg/ml	Mol.Wt.: 166kDa
Size:	Source: Rabbit	Clonality: Polyclonal

Application:	WB 1:500-1:3000, IHC 1:50-1:200 *The optimal dilutions should be determined by the end user.
Reactivity:	Human,Rat
Storage:	Rabbit IgG in phosphate buffered saline , pH 7.4, 150mM NaCl, 0.02% sodium azide and 50% glycerol. Store at -20 °C. Stable for 12 months from date of receipt.
Purification:	The antiserum was purified by peptide affinity chromatography using SulfoLink™ Coupling Resin (Thermo Fisher Scientific).
Immunogen:	A synthesized peptide derived from human FYCO1, corresponding to a region within the internal amino acids.
Uniprot:	Q9BQS8
Description:	FYCO1 3 isoforms of the human protein are produced by alternative splicing.



Western blot analysis of FYCO1 expression in Rat spleen lysate



AF0388 at 1/100 staining Rat heart tissue by IHC-P. The sample was formaldehyde fixed and a heat mediated antigen retrieval step in citrate buffer was performed. The sample was then blocked and incubated with the primary Ab at 4°C overnight. An HRP conjugated anti-Rabbit Ab was used as the secondary Ab.

**IMPORTANT:** For western blot, incubate membrane with diluted primary Ab in 5% w/v milk , 1X TBS, 0.1% Tween@20 at 4°C with gentle shaking, overnight.

---

procedures. Not for resale without express authorization.