

## IL-16 Ab

[Images\(1\)](#)

Cat.#: BF0584	Concn.: ~1mg/ml	Mol.Wt.: 20kDa
Size:	Source: Mouse	Clonality: Monoclonal

Application: ELISA 1:10000, WB 1:500-1:2000  
\*The optimal dilutions should be determined by the end user.

Reactivity: Human

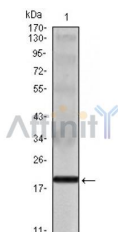
Storage: Mouse IgG1 in phosphate buffered saline (without Mg<sup>2+</sup> and Ca<sup>2+</sup>), pH 7.4, 150mM NaCl, 0.02% sodium azide and 50% glycerol. Store at -20 °C. Stable for 12 months from date of receipt.

Purification: Affinity-chromatography.

Immunogen: Purified recombinant fragment of human IL-16 expressed in E. Coli.

Uniprot: Q14005

Description: Interleukin-16, also known as lymphocyte chemoattractant factor (LCF), is a chemotactic cytokine that stimulates a migratory response in CD4<sup>+</sup> lymphocytes, monocytes, and eosinophils through binding to the CD4 receptor. IL-16 induces human T-lymphocyte expression of interleukin 2 receptor and upregulates major histocompatibility complex molecules on resting human T lymphocyte. It is able to render CD4<sup>+</sup> T cells unresponsive to TCR/CD3 stimuli. Moreover, IL-16 inhibits the replication of T cell and monocyte tropic HIV strains in vitro.



Western blot analysis using IL16 mouse mAb against IL16 recombinant protein.

**IMPORTANT:** For western blot, incubate membrane with diluted primary Ab in 5% w/v milk, 1X TBS, 0.1% Tween@20 at 4°C with gentle shaking, overnight.

For Research Use Only. Not for use in diagnostic and therapeutic procedures. Not for resale without express authorization.