

CD3 epsilon Ab

[References\(1\)](#) [Images\(1\)](#)

Cat.#: BF0520	Concn.: ~1mg/ml	Mol.Wt.: 23kDa
Size:	Source: Mouse	Clonality: Monoclonal

Application:	ELISA 1:10000, IF/ICC 1:200-1:1000 *The optimal dilutions should be determined by the end user.
Reactivity:	Human
Storage:	Mouse IgG1 in phosphate buffered saline (without Mg ²⁺ and Ca ²⁺), pH 7.4, 150mM NaCl, 0.02% sodium azide and 50% glycerol. Store at -20 °C. Stable for 12 months from date of receipt.
Purification:	Affinity-chromatography.
Immunogen:	Purified recombinant fragment of human CD3 epsilon expressed in E. Coli.
Uniprot:	P07766
Description:	CD3 is a component of T cell surface receptor (TCR), it contains 5 invariable chains: gamma-, delta-, epsilon-, and zeta/eta. Clevers et al. showed the TCR/CD3 complex consists of either a TCR alpha/beta or TCR gamma/delta heterodimer coexpressed at the cell surface with the invariant subunits. CD3 is responsible for the signal transduction of the TCR.

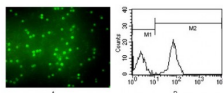


Figure 1: Immunofluorescence analysis of peripheral blood T cells using CD3 epsilon mouse mAb (A) and flow cytometric analysis of peripheral blood T cells using CD3 mouse mAb (B).

For Research Use Only. Not for use in diagnostic and therapeutic procedures. Not for resale without express authorization.