

CTDSP1 Ab

[Images\(2\)](#)

Cat.#: DF3902	Concn.: ~1mg/ml	Mol.Wt.: 30 KD
Size:	Source: Rabbit	Clonality: Polyclonal

Application: WB 1:500-1:1000, IHC 1:50-1:200, IF/ICC 1:100-1:500
*The optimal dilutions should be determined by the end user.

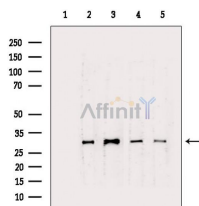
Reactivity: Human, Mouse, Rat

Storage: Rabbit IgG in phosphate buffered saline, pH 7.4, 150mM NaCl, 0.02% sodium azide and 50% glycerol. Store at -20 °C. Stable for 12 months from date of receipt.

Purification: The antiserum was purified by peptide affinity chromatography using SulfoLink™ Coupling Resin (Thermo Fisher Scientific).

Immunogen: A synthesized peptide derived from human CTDSP1, corresponding to a region within N-terminal amino acids.

Uniprot: Q9GZU7



Western blot analysis of extracts from various samples, using CTDSP1 Ab.

Lane 1: Rat liver, blocked with antigen-specific peptides,

Lane 2: Rat liver,

Lane 3: Mouse kidney,

Lane 4: HepG2 cells,

Lane 5: 293 cells(LPS 4h treatment).

IMPORTANT: For western blot, incubate membrane with diluted primary Ab in 5% w/v milk, 1X TBS, 0.1% Tween@20 at 4°C with gentle shaking, overnight.

For Research Use Only. Not for use in diagnostic and therapeutic procedures. Not for resale without express authorization.