

## ATG4C Ab

[Images\(7\)](#)

Cat.#: DF3976	Concn.: ~1mg/ml	Mol.Wt.: 49 KD
Size:	Source: Rabbit	Clonality: Polyclonal

Application: WB 1:500-1:1000, IHC 1:50-1:200, IF/ICC 1:100-1:500  
\*The optimal dilutions should be determined by the end user.

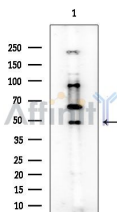
Reactivity: Human, Mouse

Storage: Rabbit IgG in phosphate buffered saline , pH 7.4, 150mM NaCl, 0.02% sodium azide and 50% glycerol. Store at -20 °C. Stable for 12 months from date of receipt.

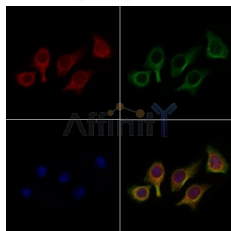
Purification: The antiserum was purified by peptide affinity chromatography using SulfoLink™ Coupling Resin (Thermo Fisher Scientific).

Immunogen: A synthesized peptide derived from human ATG4C, corresponding to a region within N-terminal amino acids.

Uniprot: Q96DT6



Western blot analysis of extracts from Mouse testis, using ATG4C Ab at 1/1000 dilution.  
Observed bands: 49kD.



DF3976 staining Hela cells by IF/ICC. The samples were fixed with PFA and permeabilized in 0.1% Triton X-100, then blocked in 10% serum for 45 minutes at 25°C. Samples were then incubated with primary Ab (DF3976 1:200) and mouse anti-beta tubulin Ab (T0023 1:200) for 1 hour at 37°C. An AlexaFluor594 conjugated goat anti-rabbit IgG (H+L) Ab (Red) and an AlexaFluor488 conjugated goat anti-mouse IgG (H+L) Ab (Green) were used as the secondary Ab.  
The nuclear counter stain is DAPI (blue).

**IMPORTANT:** For western blot, incubate membrane with diluted primary Ab in 5% w/v milk , 1X TBS, 0.1% Tween@20 at 4°C with gentle shaking, overnight.

For Research Use Only. Not for use in diagnostic and therapeutic procedures. Not for resale without express authorization.