

ENTPD1/CD39 Ab

[References\(2\)](#) [Images\(3\)](#)

Cat.#: DF4031	Concn.: ~1mg/ml	Mol.Wt.: 65 KD
Size:	Source: Rabbit	Clonality: Polyclonal

Application: WB 1:500-1:1000, IF/ICC 1:100-1:500

*The optimal dilutions should be determined by the end user.

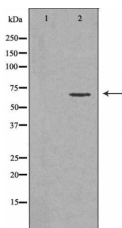
Reactivity: Human

Storage: Rabbit IgG in phosphate buffered saline , pH 7.4, 150mM NaCl, 0.02% sodium azide and 50% glycerol. Store at -20 °C. Stable for 12 months from date of receipt.

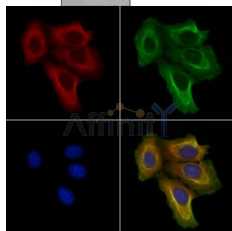
Purification: The antiserum was purified by peptide affinity chromatography using SulfoLink™ Coupling Resin (Thermo Fisher Scientific).

Immunogen: A synthesized peptide derived from human ENTDP1/CD39, corresponding to a region within the internal amino acids.

Uniprot: P49961



Western blot analysis of extracts from HeLa cells using ENTDP1 Ab.



DF4031 staining HeLa cells by IF/ICC. The samples were fixed with PFA and permeabilized in 0.1% Triton X-100, then blocked in 10% serum for 45 minutes at 25°C. Samples were then incubated with primary Ab (DF4031) and mouse anti-beta tubulin Ab (T0023) for 1 hour at 37°C. An AlexaFluor594 conjugated goat anti-rabbit IgG (H+L) Ab (Red) and an AlexaFluor488 conjugated goat anti-mouse IgG (H+L) Ab (Green) were used as the secondary Ab.

The nuclear counter stain is DAPI (blue).

IMPORTANT: For western blot, incubate membrane with diluted primary Ab in 5% w/v milk, 1X TBS, 0.1% Tween@20 at 4°C with gentle shaking, overnight.

For Research Use Only. Not for use in diagnostic and therapeutic procedures. Not for resale without express authorization.