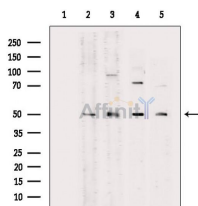


EIF2S2 Ab

[Images\(2\)](#)

| | | |
|---------------|-----------------|-----------------------|
| Cat.#: DF4050 | Concn.: ~1mg/ml | Mol.Wt.: 40 KD |
| Size: | Source: Rabbit | Clonality: Polyclonal |

| | |
|---------------|---|
| Application: | WB 1:500-1:1000 *The optimal dilutions should be determined by the end user. |
| Reactivity: | Human, Mouse, Rat |
| Storage: | Rabbit IgG in phosphate buffered saline, pH 7.4, 150mM NaCl, 0.02% sodium azide and 50% glycerol. Store at -20 °C. Stable for 12 months from date of receipt. |
| Purification: | The antiserum was purified by peptide affinity chromatography using SulfoLink™ Coupling Resin (Thermo Fisher Scientific). |
| Immunogen: | A synthesized peptide derived from human EIF2S2, corresponding to a region within N-terminal amino acids. |
| Uniprot: | P20042 |



Western blot analysis of extracts from various samples, using EIF2S2 Ab.
Lane 1: Rat muscle, blocked with antigen-specific peptides,
Lane 2: Rat muscle,
Lane 3: Mouse liver,
Lane 4: 293 cells,
Lane 5: HepG2 cells.

IMPORTANT: For western blot, incubate membrane with diluted primary Ab in 5% w/v milk, 1X TBS, 0.1% Tween@20 at 4°C with gentle shaking, overnight.

For Research Use Only. Not for use in diagnostic and therapeutic procedures. Not for resale without express authorization.