

ELK1 Ab

[Images\(1\)](#)

Cat.#: BF0266	Concn.: ~1mg/ml	Mol.Wt.: 45kDa
Size:	Source: Mouse	Clonality: Monoclonal

Application:	ELISA 1:10000, WB 1:500-1:2000 *The optimal dilutions should be determined by the end user.
Reactivity:	Human
Storage:	Mouse IgG1 in phosphate buffered saline (without Mg ²⁺ and Ca ²⁺), pH 7.4, 150mM NaCl, 0.02% sodium azide and 50% glycerol. Store at -20 °C. Stable for 12 months from date of receipt.
Purification:	Affinity-chromatography.
Immunogen:	Purified recombinant fragment of human ELK1 expressed in E. Coli.
Uniprot:	P19419
Description:	This gene is a member of the Ets family of transcription factors and of the ternary complex factor (TCF) subfamily. Proteins of the TCF subfamily form a ternary complex by binding to the the serum response factor and the serum reponse element in the promoter of the c-fos proto-oncogene. The protein encoded by this gene is a nuclear target for the ras-raf-MAPK signaling cascade.

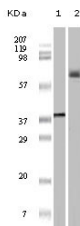


Figure 1: Western blot analysis using ELK1 mouse mAb against truncated ELK1 recombinant protein (1) and K562 cell lysates (2).

IMPORTANT: For western blot, incubate membrane with diluted primary Ab in 5% w/v milk , 1X TBS, 0.1% Tween@20 at 4°C with gentle shaking, overnight.

For Research Use Only. Not for use in diagnostic and therapeutic procedures. Not for resale without express authorization.