

## CLNS1A Ab

[Images\(4\)](#)

Cat.#: DF4160                      Concn.: ~1mg/ml                      Mol.Wt.: 37 KD  
Size:                                      Source: Rabbit                      Clonality: Polyclonal

Application:                      IHC 1:50-1:200, WB 1:500-1:1000, IF/ICC 1:100-1:500  
\*The optimal dilutions should be determined by the end user.

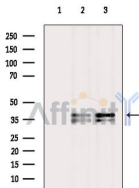
Reactivity:                      Human

Storage:                      Rabbit IgG in phosphate buffered saline , pH 7.4, 150mM NaCl, 0.02% sodium azide and 50% glycerol. Store at -20 °C. Stable for 12 months from date of receipt.

Purification:                      The antiserum was purified by peptide affinity chromatography using SulfoLink™ Coupling Resin (Thermo Fisher Scientific).

Immunogen:                      A synthesized peptide derived from human CLNS1A, corresponding to a region within C-terminal amino acids.

Uniprot:                      P54105

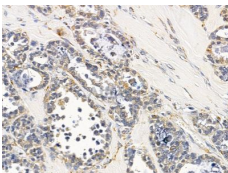


Western blot analysis of extracts from various samples, using CLNS1A Ab.

Lane 1: Hepg2 cells(heat-shock treatment), blocked with antigen-specific peptides.

Lane 2: Hepg2 cells(heat-shock treatment).

Lane 3: Hela cells(heat-shock treatment).



DF4160 at 1/100 staining human ovarian cancer by IHC-P. The sample was formaldehyde fixed and a heat mediated antigen retrieval step in citrate buffer was performed. The sample was then blocked and incubated with the primary Ab at 4°C overnight. An HRP conjugated anti-rabbit Ab was used as the secondary Ab.

**IMPORTANT:** For western blot, incubate membrane with diluted primary Ab in 5% w/v milk , 1X TBS, 0.1% Tween@20 at 4°C with gentle shaking, overnight.

For Research Use Only. Not for use in diagnostic and therapeutic procedures. Not for resale without express authorization.