

## LYN Ab

[Images\(1\)](#)

Cat.#: BF0643	Concn.: ~1mg/ml	Mol.Wt.: 56kda
Size:	Source: Mouse	Clonality: Monoclonal

Application: ELISA 1:10000, WB 1:500-1:2000  
\*The optimal dilutions should be determined by the end user.

Reactivity: Human

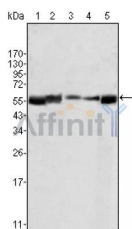
Storage: Mouse IgG1 in phosphate buffered saline (without Mg<sup>2+</sup> and Ca<sup>2+</sup>), pH 7.4, 150mM NaCl, 0.02% sodium azide and 50% glycerol. Store at -20 °C. Stable for 12 months from date of receipt.

Purification: Affinity-chromatography.

Immunogen: Purified recombinant fragment of human LYN expressed in E. Coli.

Uniprot: P07948

Description: Lyn (also known as p53/56 Lyn) is a membrane-associated protein tyrosine kinase (PTK) mostly expressed in hemopoietic cells which is important in cellular signaling. It contains an SH2 and SH3 domain and has been found to be cleaved after activation of caspases in apoptosis. A member of the Src family of PTKs, there are two known isoforms for Lyn which plays an indispensable role in the Fc epsilon RI (FceR1) and the B-cell IgM receptor signaling pathway and is essential for Syk activation and Lat phosphorylation after FceR1 aggregation and can also phosphorylate Tec on multiple residues. Lyn can also be regulated by IL-2 and IL-3. Lyn is a member of the src family of non-receptor protein tyrosine kinases that is predominantly expressed in haematopoietic tissues.



Western blot analysis using LYN mouse mAb against HL60 (1), L540 (2), SLLP-M2 (3), SEM (4) and Ramos (5) cell lysate.

**IMPORTANT:** For western blot, incubate membrane with diluted primary Ab in 5% w/v milk, 1X TBS, 0.1% Tween@20 at 4°C with gentle shaking, overnight.

For Research Use Only. Not for use in diagnostic and therapeutic procedures. Not for resale without express authorization.